

INDEX TO SHEETS - SEC X

1	Title Page and Layout Map
2	State Map
3	Typical Cross Section of Roadway
4	Plan and Profile 5/2 2+00 to 35+00
5	" " 35+00 to 60+00
6	" " 60+00 to 120+00
7	" " 120+00 to 180+00
8	" " 180+00 to 240+00
9	" " 240+00 to 300+00
10	" " 300+00 to 360+00
11	" " 360+00 to 420+00
12	" " 420+00 to 480+00
13	" " 480+00 to 540+00
14	Summary Sheet & Gravel haul diagrams
15	List of Drainage Structures

Drainage Structures:
 Timber Trestle Plans B-2-40
 Concrete Culvert Plans - B-2-55, B-2-56, B-2-4
 Pipe Culvert Plan B-2-120

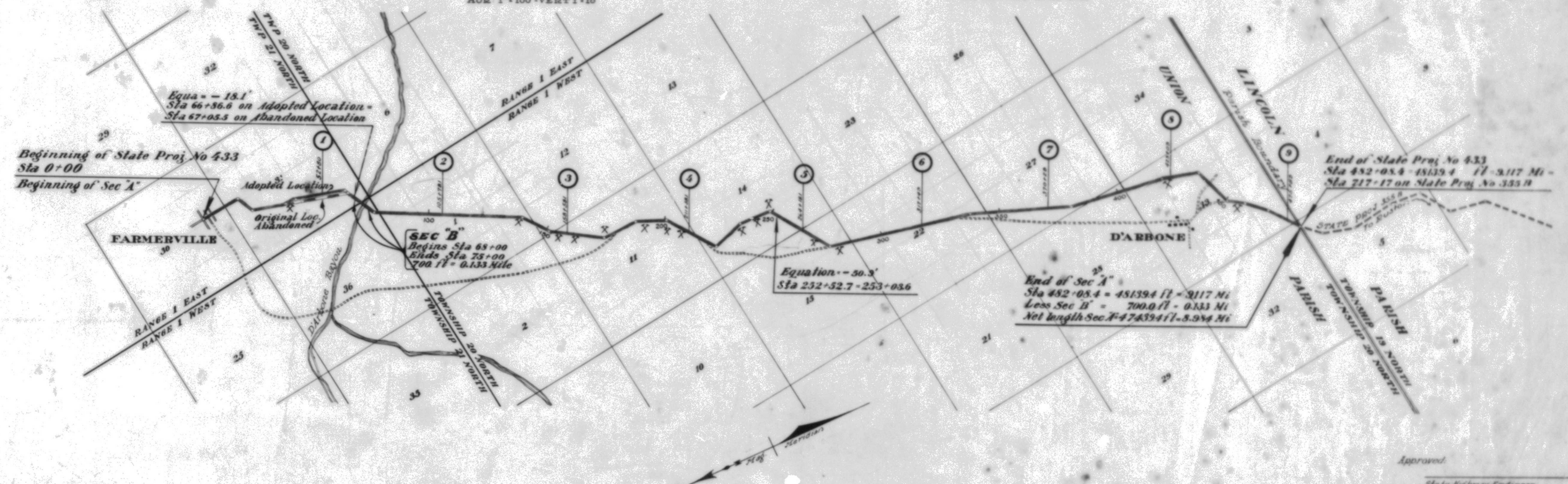
STATE OF LOUISIANA
LOUISIANA HIGHWAY COMMISSION
 PLAN AND PROFILE OF PROPOSED
STATE HIGHWAY
 STATE PROJECT No 433
FARMERVILLE-BUSTON HIGHWAY
 UNION PARISH

Farmerville-Buston Highway

433	40	2468	2469	2	18
-----	----	------	------	---	----

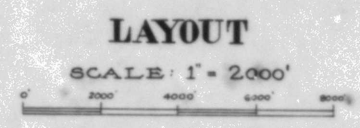
SCALES:-
 PLAN: 1" = 100'
 PROFILE: 1" = 100' VERT. 1" = 10'
 BEARINGS OF TANGENTS ARE MAGNETIC.
 FIELD BOOKS
 TRANSIT No 2474
 LEVEL Nos. 2468-2469

LAYOUT-MAP ONLY
 REVISIONS:
 10-1924
 10-1924
 10-1924
 10-1924



CONVENTIONAL SIGNS

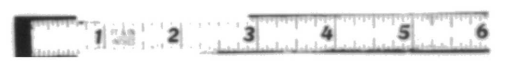
Base Line	---
Grade Line	---
Ground Line	---
Right of Way	---
Travelled Roadway	---
Fences	---
Levees	---
Canals	---
Railroads	---
Property Lines	---
Section & Grant Lines	---
Township & Range Lines	---
Word & Road Dist. Boundary Lines	---
Parish & State Boundary Lines	---
Telephone & Telegraph Lines	---
Boundary Lines (General)	---
Mile Post at end of mile	---



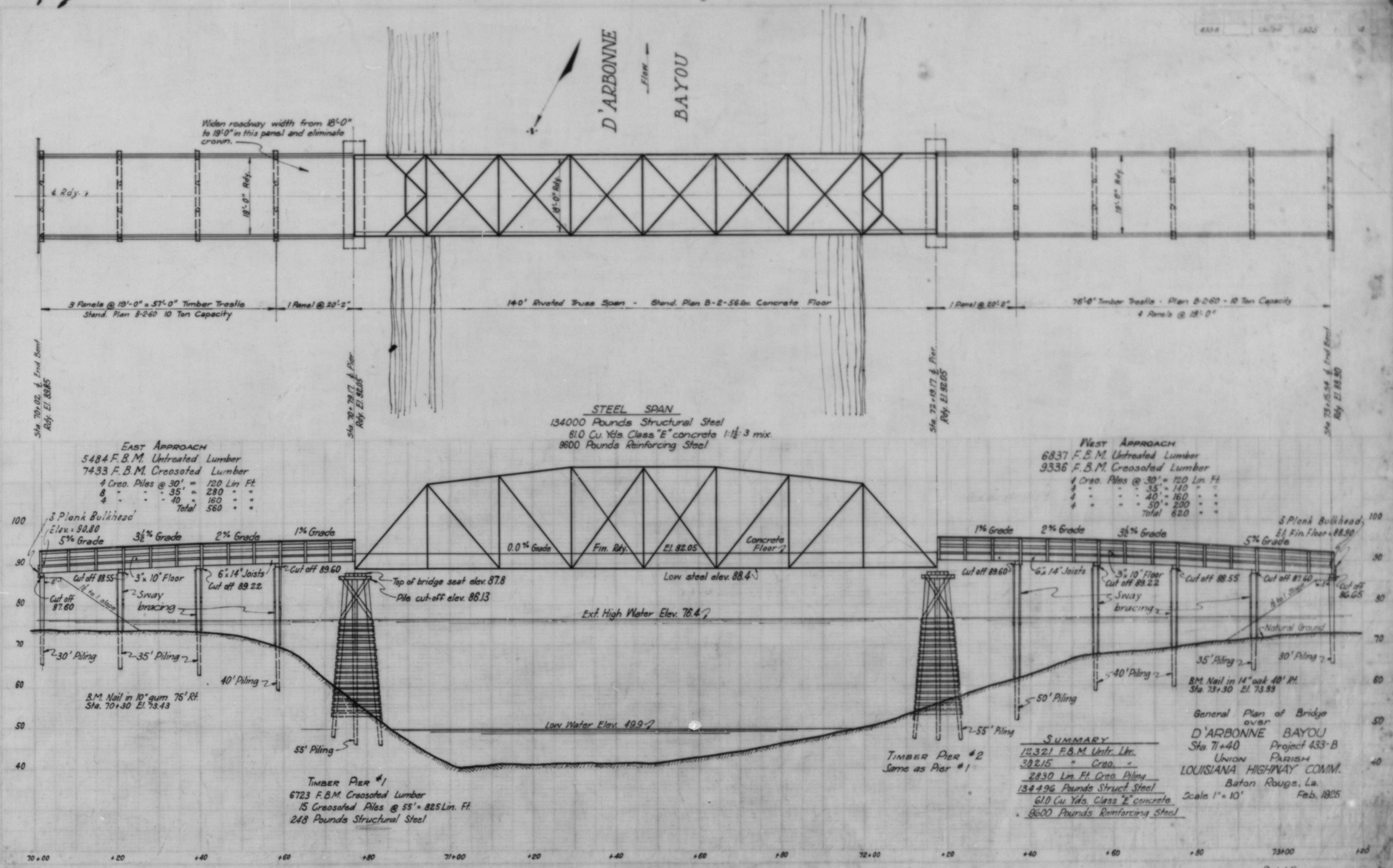
Approved: _____
 State Highway Engineer
 Approved: _____
 Recommended for Approval: _____
 Recommended for Approval: _____
 APPROVED: _____

October 1924

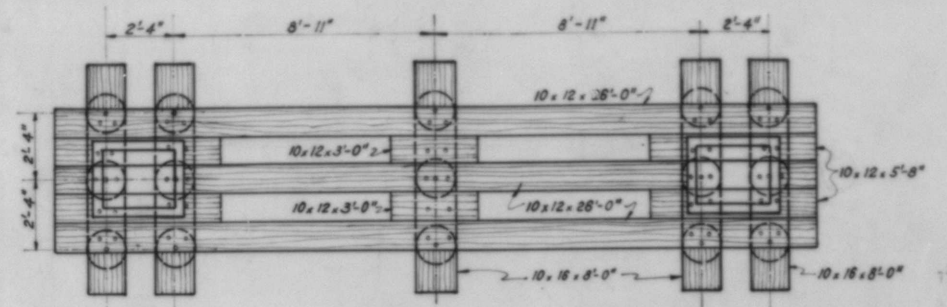
FINAL TRACINGS



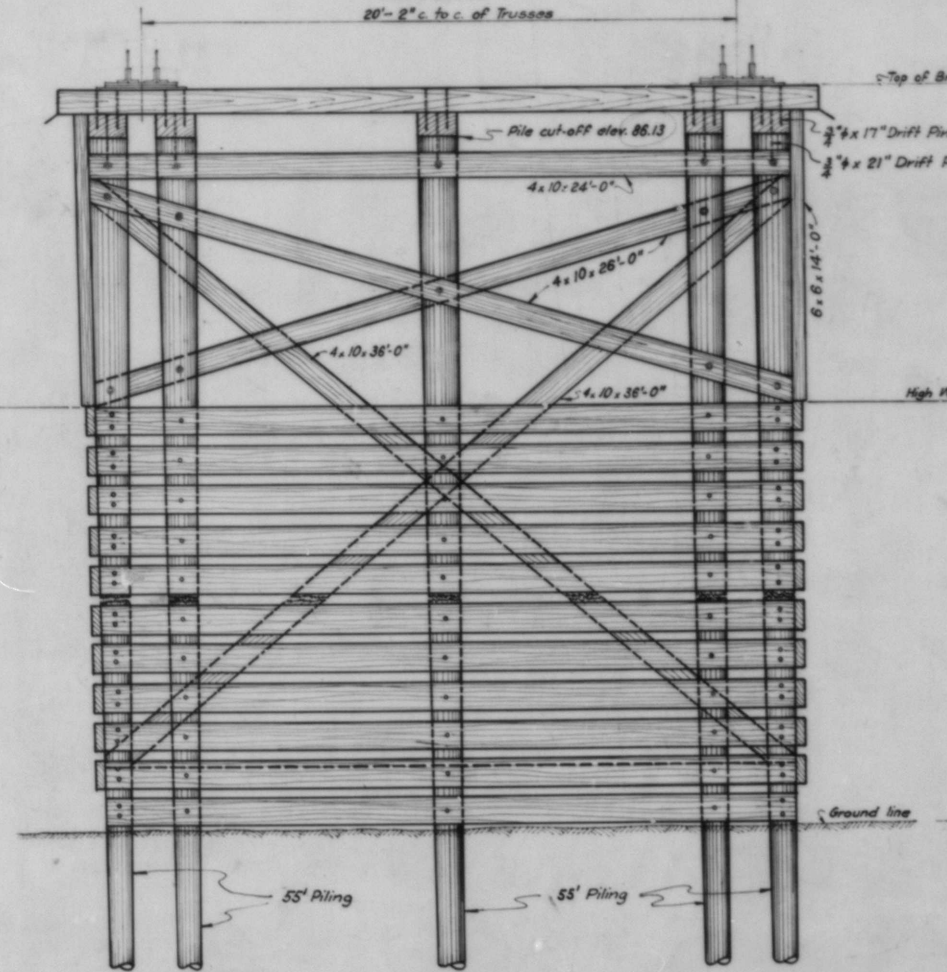
19



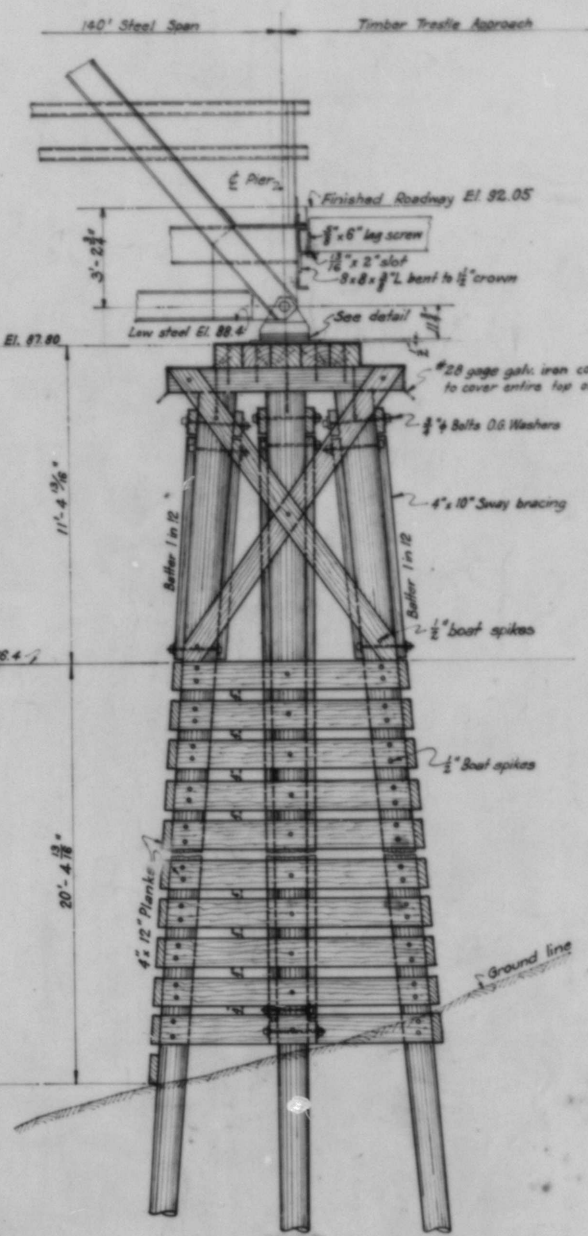
20



PLAN



ELEVATION



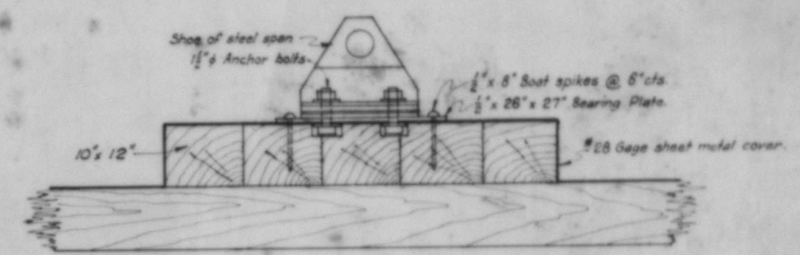
END VIEW

BILL OF MATERIAL (One Pier)

Number	SIZE	Description	F.B.M.	Location
3	10x12x26'-0"	Cree. Rough	780	Shillage
4	10x12x5'-0"	" "	227	"
2	10x12x3'-0"	" "	80	"
5	10x18x8'-0"	" "	533	Caps
4	6x6x14'-0"	" "	188	Sway Bracing
8	4x10x24'-0"	" "	840	"
4	4x10x26'-0"	" "	347	"
2	4x10x36'-0"	" "	240	"
27	4x12x24'-0"	" "	2532	Fender
14	4x12x10'-0"	" "	580	Fender
12	4x12x12'-0"	" "	576	"
			8723	Total

15 Cree. Piles @ 55' = 825 Lin. Ft.

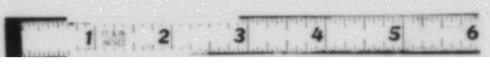
- To be included with Cree. Lumber and piling
- 40 Sq. Yds. #28 gage galv. sheet iron = 20.5[#]
 - 20 - 3/4" x 25 1/2" bolts with O.G. Washers
 - 27 - 3/4" x 2 1/2" " " " "
 - 333 - 1/2" x 10" Boat spikes
 - 12 - 3/4" x 8" " " " "
 - 15 - 3/4" x 21" drift pins
 - 30 - 3/4" x 17" " " " "
- Steel
- 2 - 1/2" x 26" x 27" bearing plate = 200[#]
 - 8 - 1/2" x 6" anchor bolts with washers = 48[#]
- Note: Pile lengths given are approximate for estimating purposes only.



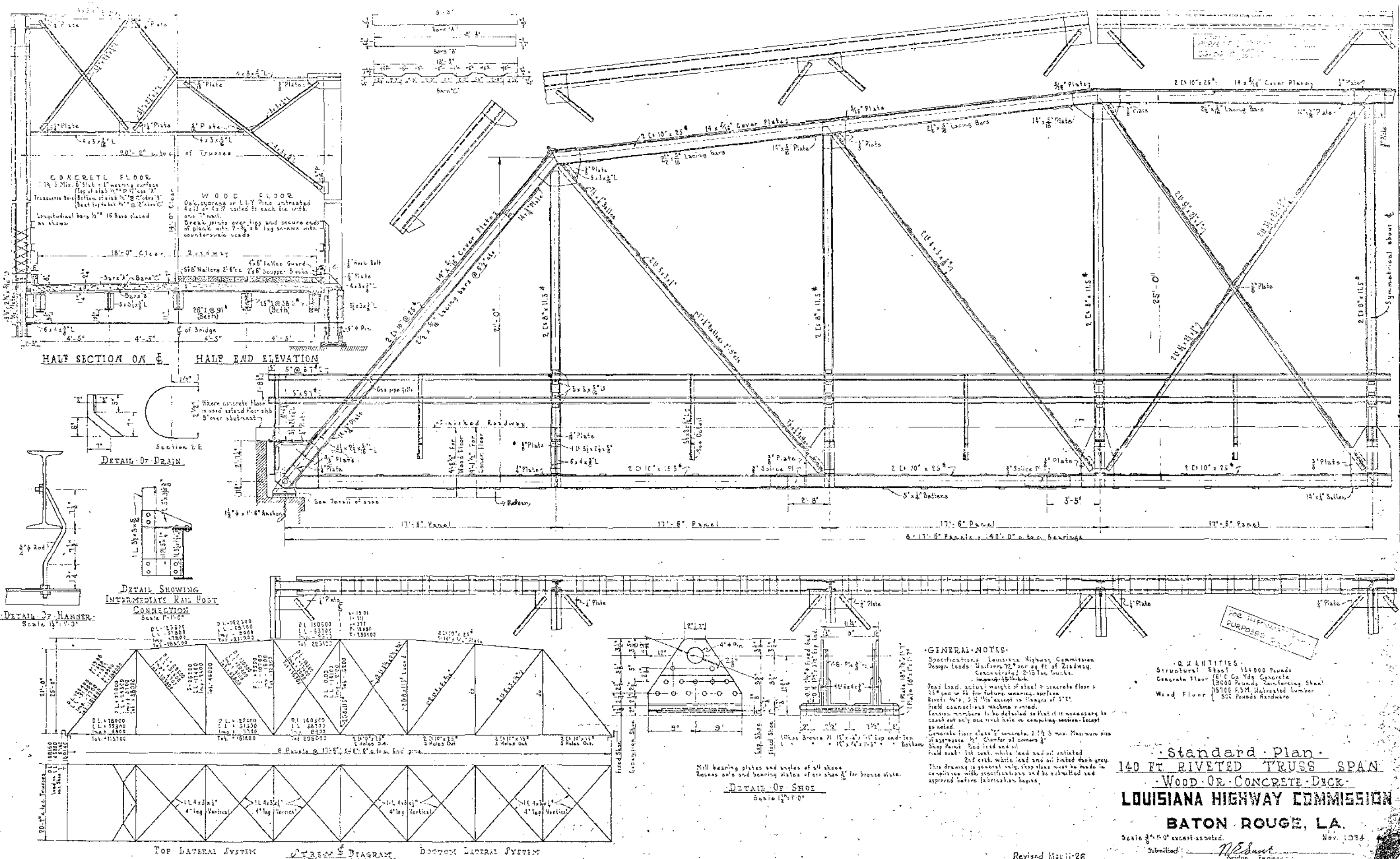
DETAIL OF BRIDGE SEAT
Scale 1" = 1'-0"

TIMBER PIER
FOR
D'ARBONNE BAYOU BRIDGE
UNION PARISH PROJ. 433-B
LOUISIANA HIGHWAY COMM.
Baton Rouge, La.
Scale 3/8" = 1'-0" except as noted. Feb. 1925

FINAL TRACINGS



B-14-9



GENERAL NOTES

Specifications Louisiana Highway Commission
 Design loads Uniform 72' per sq ft of roadway
 Concentrated 2-15 Ton trucks
 Impact 15% truck
 Dead load actual weight of steel, concrete floor & 25' per sq ft for future wearing surface
 Rivets 40, 50 & 70 lbs except in stages of 50 lbs
 Field connections machine riveted
 Tension members to be detailed so that it is necessary to count out only one rivet hole in computing section, except as noted.
 Concrete floor class 'E' concrete, 1 1/2" S max. Maximum size of aggregate 3/4" Clear for all corners 1" Sharp Point. Red lead and oil field coat, white lead and oil tinted.
 This drawing is general only, shop plans must be made in compliance with specifications and be submitted and approved before fabrication begins.

QUANTITIES

Structural Steel 154,000 Pounds
 Concrete Floor 68' Cu Yds Concrete
 13,000 Pounds Reinforcing Steel
 Wood Floor 15,700 F.M. Untreated Lumber
 500 Pounds Hardware

Standard Plan
140 FT RIVETED TRUSS SPAN
WOOD OR CONCRETE DECK
LOUISIANA HIGHWAY COMMISSION
BATON ROUGE, LA.

Scale 3/4" = 1'-0" except as noted.
 Nov. 1934
 Submitted: *N. E. Smith*
 Division Engineer

Revised May 11-26

10-2-66 REVISED

Detailed and Traced by M.C. Heath